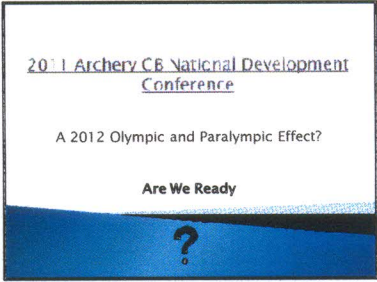
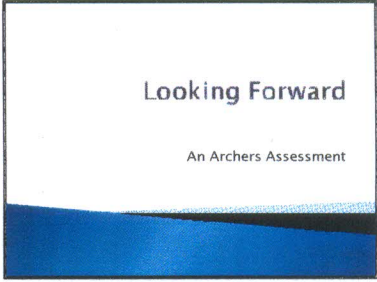


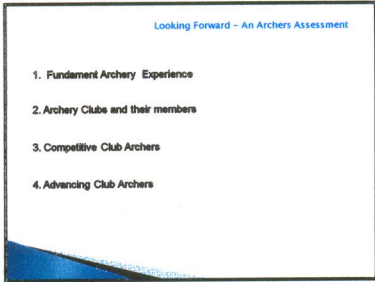
INTRO



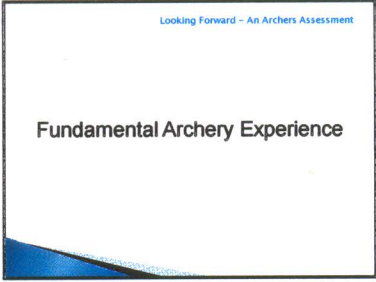
INTRO



INTRO



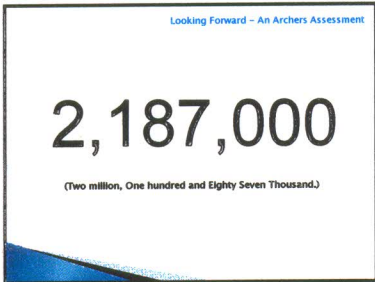
1



2



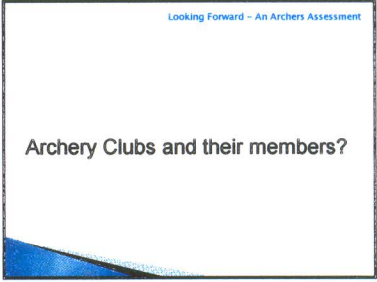
3



4



5



6

Looking Forward - An Archers Assessment

What if all 250,000 wanted to join a club ?

7

Looking Forward - An Archers Assessment

Current Capacity for new Members

=

10,200 ?

8

Looking Forward - An Archers Assessment

Competitive Club Archers

9

- Looking Forward - An Archers Assessment
- Pressure on Playing and Practice Facilities.
 - Sufficient qualified Coaches?
 - Sufficient qualified Judges?
 - Sufficient Volunteers?
 - Sustainable Administration?

10

Looking Forward - An Archers Assessment

Advancing Club Archers

11

Looking Forward - An Archers Assessment

Its beginning to look Negative

$A = B/2$

A = The Problem
B = The Solution

12

Changes

13

Looking Forward - An Archers Assessment

If our core sport is

If our core traditions are.....

If our core disciplines are.....

If our core procedures are.....

If our rules are.....

Then any change can be tolerated.

14

Looking Forward - An Archers Assessment

What IF

15

Looking Forward - An Archers Assessment

Potential Benefits.

- Reduced Membership Costs
- Reduced Equipment Costs
- Greater Range of Equipment Choice
- Increased Archer Experience

And

16

Looking Forward - An Archers Assessment

Potential Benefits.

Reduced Membership Costs - Reduced Equipment Costs - Greater Range of Equipment Choice
Increased Archer Experience

And

New - Better - Cheaper

Facilities!!!!

17

Looking Forward - An Archers Assessment

2,187,000

18

Looking Forward - An Archers Assessment

Are we Archers going to Rise Up and Meet the Challenge ?

19

Looking Forward - An Archers Assessment

Finally

20

2011 Archery GB National Development Conference

A 2012 Olympic and Paralympic Effect?

Are We Ready ?

21 *A

2011 Archery GB National Development Conference

A 2012 Olympic and Paralympic Effect?

Are We Ready !

21B