



Para-Archery

AGB JUDGE CONFERENCE – 4TH AND 5TH MARCH 2023

Contents

- General information
- What is classification?
- Para-archers at different events
- WA Classification Cards
- Adaptive equipment
- Equipment inspection
- Archers with hearing impairments
- Archers with sight impairments
- Assistance animals

General information

- ▶ Most important – remember that these are just archers, the same as everyone else on the field, they are there to have a good day and to hopefully shoot well. We must do what we can, within the rules, to help that happen.
- ▶ A lot of disabilities are hidden, as Judges we are not there to decide on what someone needs or does not need to help them shoot. We are not doctors!
- ▶ Whilst some archers may have a permanent disability, some will have conditions which are temporary (such as a broken leg) and some will have conditions which change over time and they may have good days and bad days, so do not make assumptions.

General things you can do to help

- ▶ As with any archer, go and speak to them. Find out if they need assistance or if they know what they are doing
- ▶ There are lots of things you can do to help them. For example if they want to shoot standing but walking is difficult they can put a chair behind the shooting line to sit on when not shooting. They can get someone else to score for them so they don't need to walk to the targets every time etc
- ▶ Liaise with the Tournament Organiser to make sure that if they use a chair or stool on the line that there is space
- ▶ Check in on them from time to time, particularly if they are staying on the line. Make sure they are comfortable, do they have someone to get them drinks, do they have adequate protection from the weather (some people cannot always regulate their temperatures as well as others) etc
- ▶ Remember things can take them a bit longer. So make sure they have time to go to the toilet and put on waterproofs
- ▶ If you have to pause shooting due to the weather, make sure they are kept informed and are safe

What is classification?

- ▶ Done by a team of trained qualifiers from World Archery and tends to be carried out before major para events around the world
- ▶ They assess each archer to decide on their category and what adaptive equipment they can have
- ▶ Designed to create a level playing field across all different types of disabilities
- ▶ More details including a copy of the Classifiers Handbook can be found on the World Archery website
- ▶ There has been an Archery GB version done in the past

What is classification?

- ▶ Who might be classified
 - ▶ Archers who are currently shooting for or who have shot for Archery GB
- ▶ Who might not be classified
 - ▶ Archers who have just started archery
 - ▶ Archers who are not eligible to or do not want to shoot for Archery GB
 - ▶ Archers who have a temporary condition, such as a broken leg

Para-archers at different events – non classified archers

- ▶ All archers are able to shoot at all events, the only difference is how we check their equipment
- ▶ Under AGB rules archers self-declare their disability

1100 - If disabled archers are unable to comply with a Rule of Shooting then they will be allowed dispensation from that Rule and any reasonable adjustments necessary will be made. Any variations must be related to the needs and the safety of the person concerned.

Para-archers at different events – non classified archers

- ▶ What are “reasonable adjustments” - Anything that does not compromise the safety of the archer, the event or give them an advantage over other archers. For example
 - ▶ Shooting from a stool or chair
 - ▶ Remaining on the shooting line
 - ▶ Using a mouth-tab or unusual release aid system etc
- ▶ What would not be allowed
 - ▶ Shooting with anything electric or electronic
 - ▶ No compounds over 60lbs and no dangerous draw techniques
 - ▶ If you are not sure if something is allowed or not then speak to the whole team of Judges and if you are still not sure then allow the archer to shoot and refer it to AGB for them to make a decision (as you would any unusual equipment)

Para-archers at different events –classified archers

Archers who have been classified will be able to claim records and awards at RS and WRS events. In order to do this we need to check their WA classification cards and their adaptive equipment

1 – Athlete’s photo

2 – Class

3 – Status (C, R, FRD)

4 – Adaptive Equipment

4A – Pictures of any unique devices

5 - Comments

The image shows a 'PARA - ARCHERY INTERNATIONAL CLASSIFICATION FORM 2021' with several sections highlighted by red numbers:

- 1**: Points to the 'Insert photo' field for the athlete.
- 2**: Points to the 'CLASSIFICATION CLASS' field, which contains 'ST'.
- 3**: Points to the 'CLASSIFICATION STATUS' field, which is currently empty.
- 4**: Points to the 'ASSISTIVE DEVICES' table, which has five empty rows.
- 4A**: Points to the 'COMMENTS' field, which is a large text area.
- 5**: Points to the 'COMMENTS' field, which is a large text area.

Other visible fields on the form include: gender, WA ID, FAMILY NAME, GIVEN NAME, BIRTHDATE, COUNTRY, DATE OF CLASSIFICATION, PLACE OF CLASSIFICATION, ATHLETE'S SIGNATURE, and a field for 'Insert photo of unique device'. The 'CLASSIFICATION STATUS' field has a 'date of review' sub-field.

WA Classes and Divisions

- ▶ On the Classification card there are several possible Classes
 - ▶ W1
 - ▶ W2 – competes in the Open Division
 - ▶ ST (Standing) – competes in the Open Division
 - ▶ NE – Not eligible but may still be able to use adaptive equipment
 - ▶ VI – Visually Impaired - B1, B2, B3
- ▶ Divisions
 - ▶ W1 – Men, Women, Doubles, Mixed Team
 - ▶ Open (W2 and Standing) Compound and Recurve - Men, Women, Doubles, Mixed Team
 - ▶ VI – V1 and V2/V3 (Men and women shoot together and there is no team yet)

Status

- ▶ On the Classification card there are several possible Status
 - ▶ C – Confirmed – Unlikely to change
 - ▶ R – Review – Previously classified archers that have a condition that is no longer eligible. They need to be classified again prior to competing again internationally
 - ▶ FRD – Fixed Review Date - for archers that have a condition that may change. They will need to be classified again prior to that date to compete again internationally

Adaptive Equipment

- ▶ Previously known as Assistive Devices
- ▶ Constantly reviewed to keep up with changes in equipment
- ▶ The classification card lists what devices they can use, apart from a few exceptions, if it is not listed on the card they cannot have it
 - ▶ Exceptions include lower limb prosthesis or braces
- ▶ The card will often have photos of more unusual devices to help
- ▶ Examples include Wheelchair, Stool, Strapping, Release aid system, Bow bandage, Bow arm aid, Arm splints, Block or Wedge, Shooting assistant
- ▶ There is a new “resource guide” available on the WA website

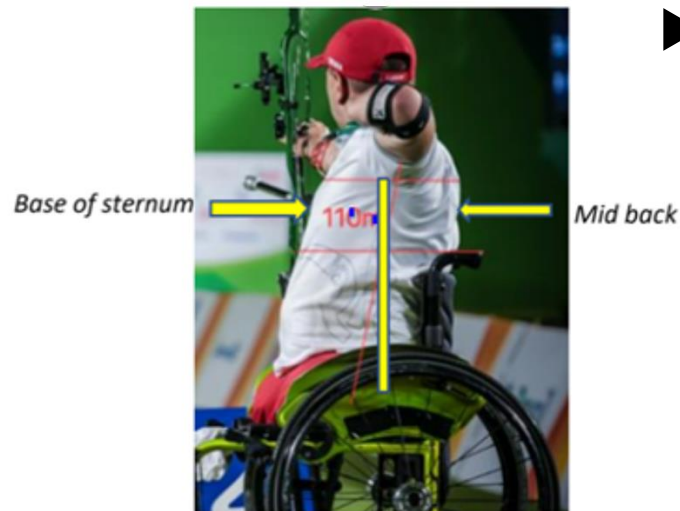
Wheelchairs

- ▶ A standard wheelchair (can be electric) with 3 or 4 wheels touching the ground
- ▶ If electric the chair must be turned off and in an upright position
- ▶ If they use a 5th motorised wheel it must be removed on the line
- ▶ Can have anti-tippers but they cannot touch the ground
- ▶ No part of the chair can support the bow arm during shooting



Wheelchairs

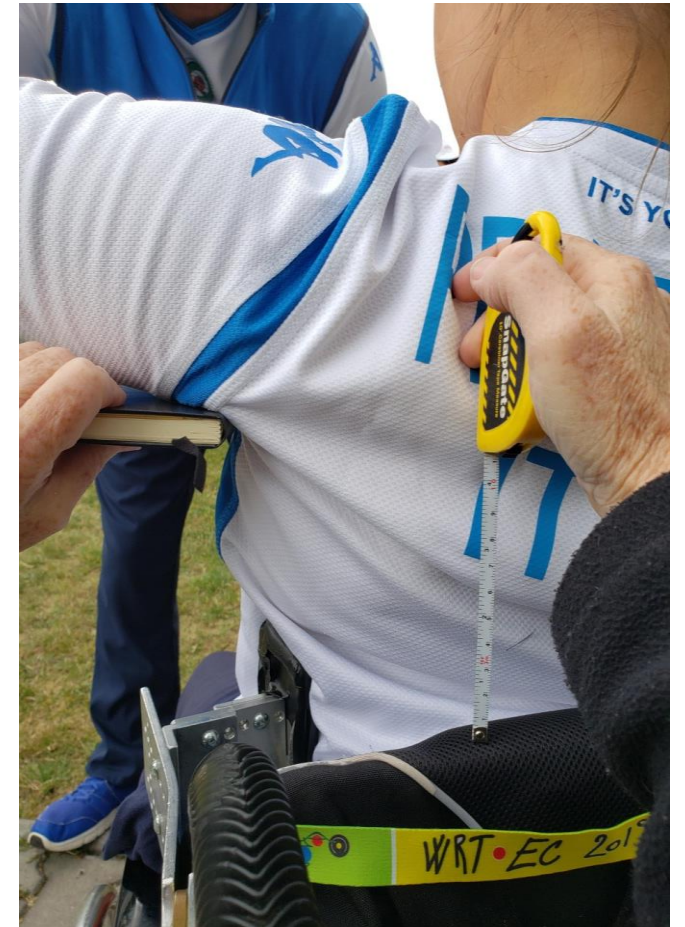
- ▶ The wheelchair including all equipment and the athlete shall not exceed 1.25m in length
- ▶ The archer's feet and the footplates of the chair must not be in contact with the ground whilst shooting



- ▶ Lateral support – which is anything to stop the archer falling sideways by supporting the trunk above the pelvis is allowed as long as it does not protrude further than half the width of the archer's ribcage at their mid back point. Support around the pelvis and legs is absolutely fine

Wheelchairs

- ▶ All parts of the wheelchair must be at least 110mm (11cm) below the archer's armpit whilst shooting. This includes the handles of the chair if they are directly attached to the back of the chair.
- ▶ Some W1 archers are allowed less but it will be noted on the classification card



Wheelchairs

- ▶ Anti roll devices, like chocks or blocks are allowed, but only if the ground is uneven – it is the decision of the Judge whether it is uneven or not
- ▶ If there is a slope then they can use the maximum of 2 devices behind or in front of the rear wheels. They are not allowed on flat surfaces
- ▶ If the ground is uneven they may put a block under one side to level out
- ▶ Brakes on the chair are allowed as long as they don't touch the ground



Strapping

- ▶ Will be listed on the Classification Card if allowed
- ▶ W1 archers are allowed as much strapping as needed and in any direction, as long as it does not support the bow arm
- ▶ W2 archers are limited to one strap horizontally across the body and it cannot be more than 5cm wide and it must be below the 110mm height restriction



Strapping

- ▶ Some archers are also allowed leg strapping (it will be on the card, but some don't always use it). Again this is limited to 5cm wide and can be around their ankles, knees or mid-thigh
- ▶ W1 archers may also have a non-rigid corset-type body support listed on their cards, this can be used along with the strapping
- ▶ W2 archers can temporarily be allowed rigid or non-rigid corset type body support, but this is only for a limited time and cannot be used with strapping
- ▶ No other body support or corset is allowed under the clothes, as this will give extra stability

Stool

- ▶ The stool cannot have a backrest of any type
- ▶ The stool including all equipment and the athlete shall not exceed 1.25m in length



Release Aid Systems

- ▶ This is a simple system to allow archers to use a WA legal release aid
- ▶ There may be a picture of it on the Classification card
- ▶ The system cannot provide any lateral support or act as a rigid corset. It cannot sit below the bottom of the ribcage and it cannot wrap around more than half the trunk, but there can be a strap or lacing to hold it in place



Release Aid Systems

- ▶ Release aid systems are not allowed in the Recurve Open
- ▶ However they may use a mouth tab, but it must be permanently fixed to the string
- ▶ It does not need to be listed on the Classification card



Bow Bandage

- ▶ This is a bandage which secures the bow grip to their hand
- ▶ It can be any non rigid strapping but it must allow movement of the bow on the arrow's release



Bow Arm Aid

- ▶ This is an artificial aid or prosthesis attached to the bow. It can include a “hand”
- ▶ It cannot be electric or electronic
- ▶ It must allow movement of the bow on the arrow's release



Bow Arm Splint

- ▶ An elbow and/or wrist splint may be allowed for some athletes
- ▶ It must be clearly described on the Classification Card and may be rigid



String Arm Wrist Splint

- ▶ A wrist or wrist splint-release aid may be allowed for some athletes on the string arm



Block or Wedge

- ▶ This does not have to be listed on the Classification Card and any athlete can use them at a WA event
- ▶ It can be used to raise the whole of the foot or part of it. It can be attached to the shoe
- ▶ It cannot cause an obstruction to any other archer and cannot extend more than 2cm beyond the shoe



Shooting Assistant

- ▶ Some archers are allowed an Assistant. The assistant can nock the arrows and / or move the sight for the archer. They can move the sight during the ends
- ▶ The assistance cannot cause a disturbance to the other archers and cannot talk during the end. They cannot provide any coaching in any way, including spotting the arrows and cannot use binoculars or a scope
- ▶ They should wear the same uniform and athlete number as the archer



W1 Specific Rules

- ▶ They can shoot either Recurve or Compound bows
- ▶ The peak draw weight of the bow is 45lbs
- ▶ No peep sights or scopes or levelling devices are allowed
- ▶ Only one lip or nose mark on the string is allowed
- ▶ Release aids are allowed
- ▶ If strapping is allowed it can be of any size and direction
- ▶ If noted on the Classification Card they may be allowed an Assistant and the height of the back of the chair may be higher than 110mm to the armpit
- ▶ W1 archers use a full size 80cm face

Equipment Inspection

- ▶ At equipment inspection it is often better to go to the archer to save them moving all their equipment
- ▶ Ask them if they have a World Archery Classification Card
- ▶ If they do then check their Adaptive Devices against it and against the rules. Don't forget to check their archery equipment and their clothing as you would normally
- ▶ If they do not then check their equipment is safe to use and will not interfere with other archers and check the normal bits
- ▶ When checking poundage remember it may be more difficult for them to do, so maybe see if there is someone else who can help them

During Shooting

- ▶ All the normal rules apply to Para archers, for example they can load arrows during the 10 seconds, even if they are already on the shooting line
- ▶ Things to watch out for
 - ▶ Feet resting on the floor for wheelchair archers
 - ▶ The 110mm gap between the highest part of the chair and the armpit is maintained
 - ▶ The 110mm gap between the top of the strapping and the armpit is maintained

Electronics

- ▶ The Para and Judges' Committees agreed that archers who are sitting in a wheelchair and remain on the shooting line all the time can be allowed to use devices like tablets or cell phones to read, access social media, etc., during the scoring breaks, but not while shooting is in progress for any archers in the competition.

Visually Impaired Archers

- ▶ Archery GB and World Archery each have their own rules regarding VI archers, their rounds and equipment
- ▶ Archers may have a spotter to tell them where the arrows have landed, timing information and safety information
- ▶ If you need to change a target face then make sure that the “x” remains in exactly the same place, it is often easier if two of you do it together

Archers with hearing impairments

- ▶ Often a hidden disability so harder to spot
- ▶ When communicating remember for those that lip read to speak slowly but not too slowly and do not over announce and do not shout. Speak normally
- ▶ Remember that for some sign language, and not English, may be their first language, so if writing anything down keep it simple
- ▶ Use hand signals and don't be afraid to touch their arm or shoulder to get their attention
- ▶ If they do not have someone with them work out a way for their target companions to let them know if there is an emergency stop
- ▶ Deb Horn and some of her archers have produced a couple of documents including basic BSL and more information. They can be found on the SCAS website under the Judges section and will hopefully be published on the AGB website soon.

Assistance Animals

- ▶ Archery GB has issued specific guidance on assistance dogs, but it would apply to all animals
- ▶ Assistance dogs are allowed at AGB events unless prohibited by the land owner (and this reason does not breach discrimination legislation). Please let the Organiser know in advance
- ▶ At World Record Status events no assistance or support dogs are permitted on the field of play
- ▶ Other dogs are allowed at the discretion of the Organiser but should not be on the field of play or within 10m of the shooting line
- ▶ The owner should keep the dog under control at all times and clear up after it. If there are any issues the dog may have to be removed from the venue.